

DOUVRES LA DELIVRANDE (14)

Rue de Normandie

Maison C n°3 - Type T5

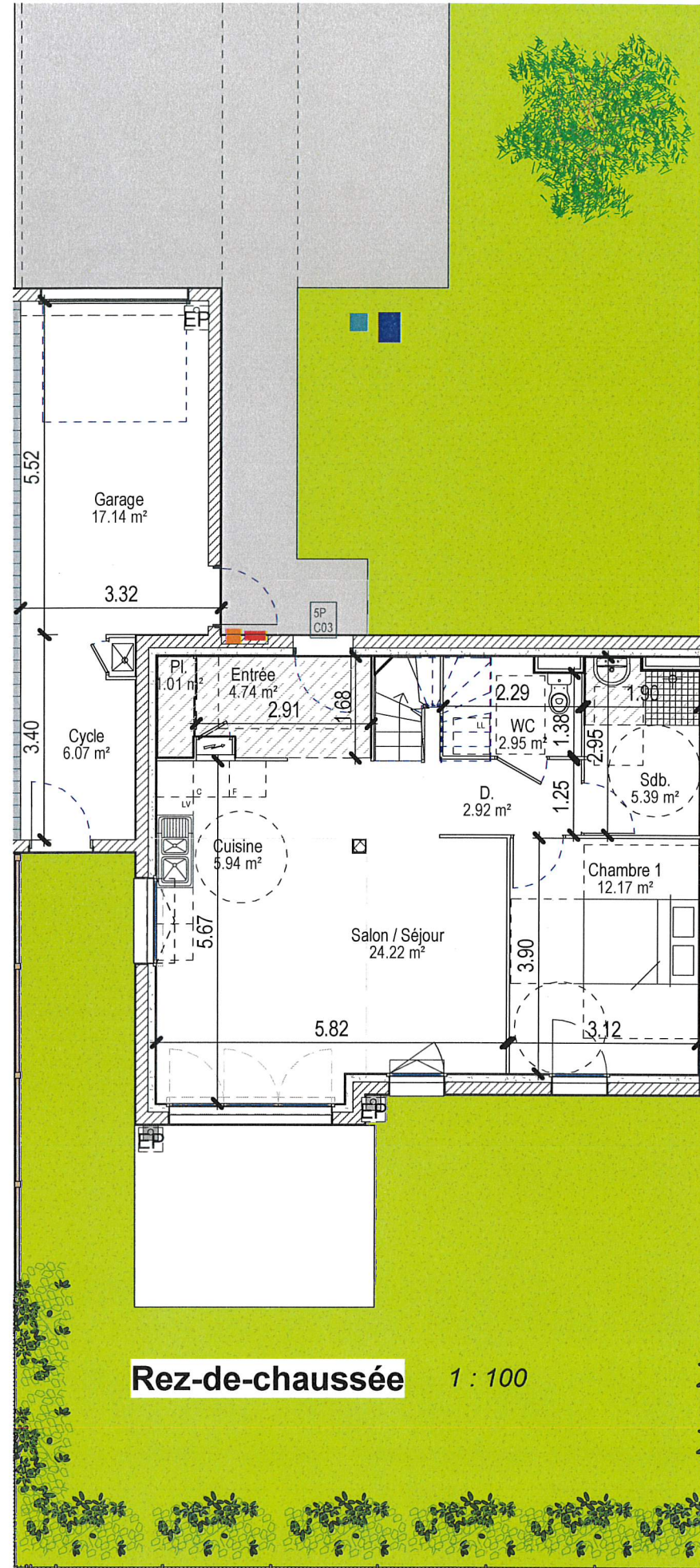
S.Habitable C3

Chambre 1	12.17 m ²
Cuisine	5.94 m ²
D.	2.92 m ²
Entrée	4.74 m ²
Pl.	1.01 m ²
Salon / Séjour	24.22 m ²
Sdb.	5.39 m ²
WC	2.95 m ²

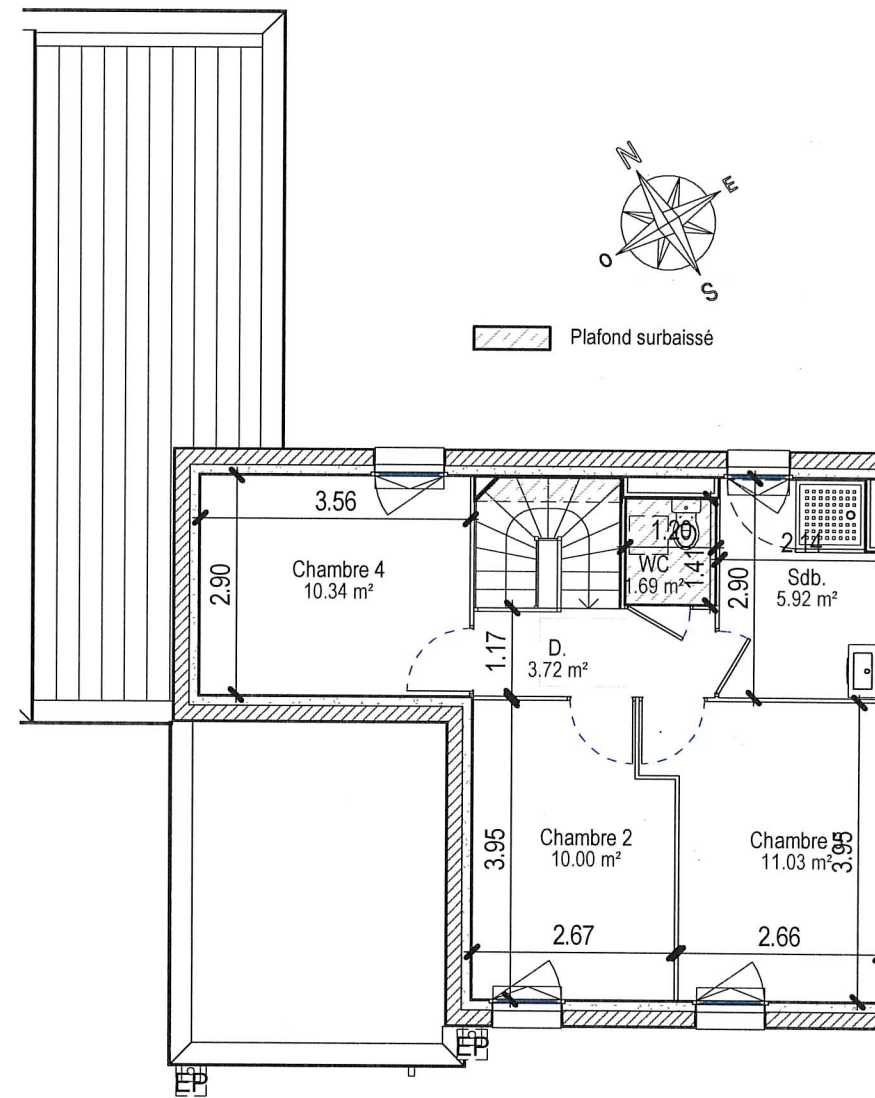
Chambre 2	10.00 m ²
Chambre 3	11.03 m ²
Chambre 4	10.34 m ²
D.	3.72 m ²
Sdb.	5.92 m ²
WC	1.69 m ²
102.04 m ²	

Cycle	6.07 m ²
Garage	17.14 m ²
23.21 m ²	

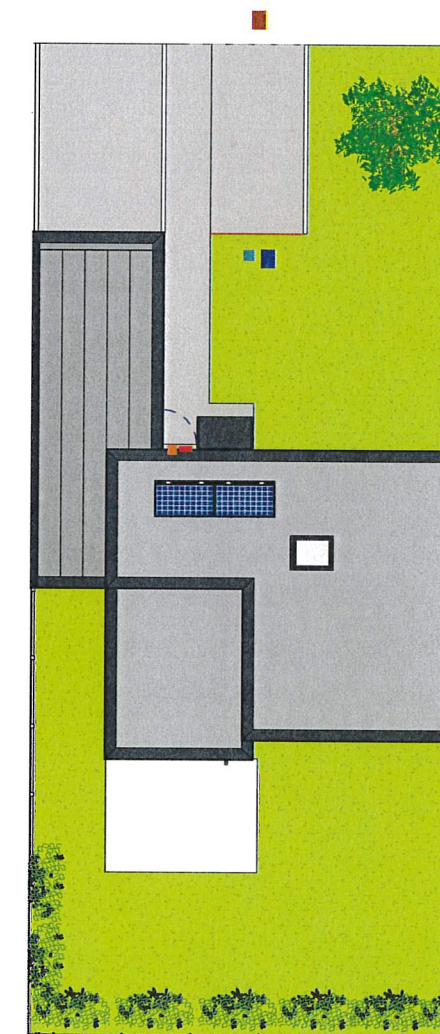
Parcelle C3	298.38 m ²
Jardin C3	153.07 m ²



Rez-de-chaussée 1 : 100



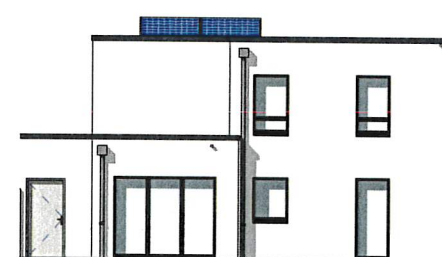
Etage 1 : 100



Plan masse 1 : 200



Façade Nord 1 : 200



Façade Sud 1 : 200

Maître d'ouvrage Maître d'oeuvre